



# Facts and Figures 2022/23

Schoolhouse built in  
**1923**  
 First Ever Day  
 of School  
 August 23, 2010

**38**  
 spoken native languages  
 other than German and English  
 in the families of our  
 school community

7%  
 trilingual family

10%  
 other language/  
 other language  
 families

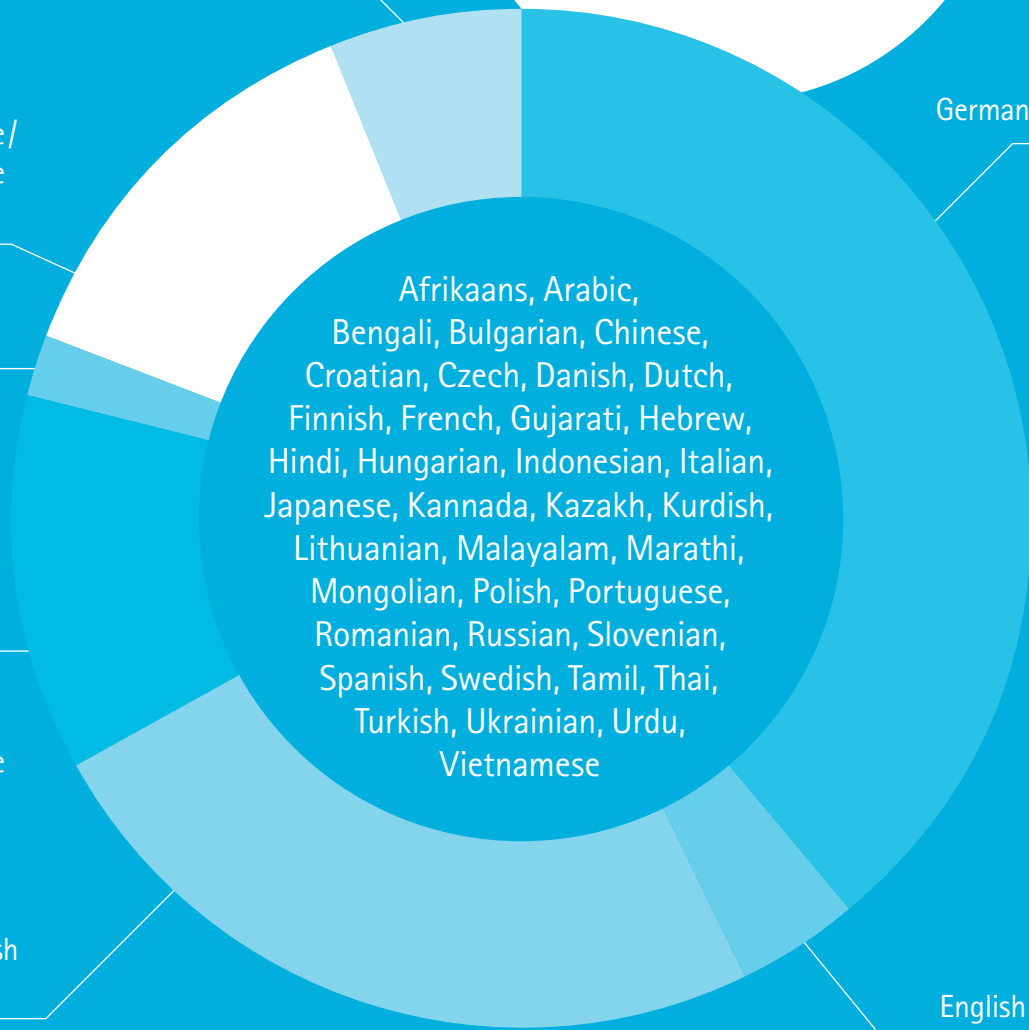
4%  
 English/  
 other  
 language  
 families

9%  
 German/  
 other language  
 families

26%  
 German/English  
 families

38%  
 both parents  
 German native speakers

6%  
 both parents  
 English native speakers



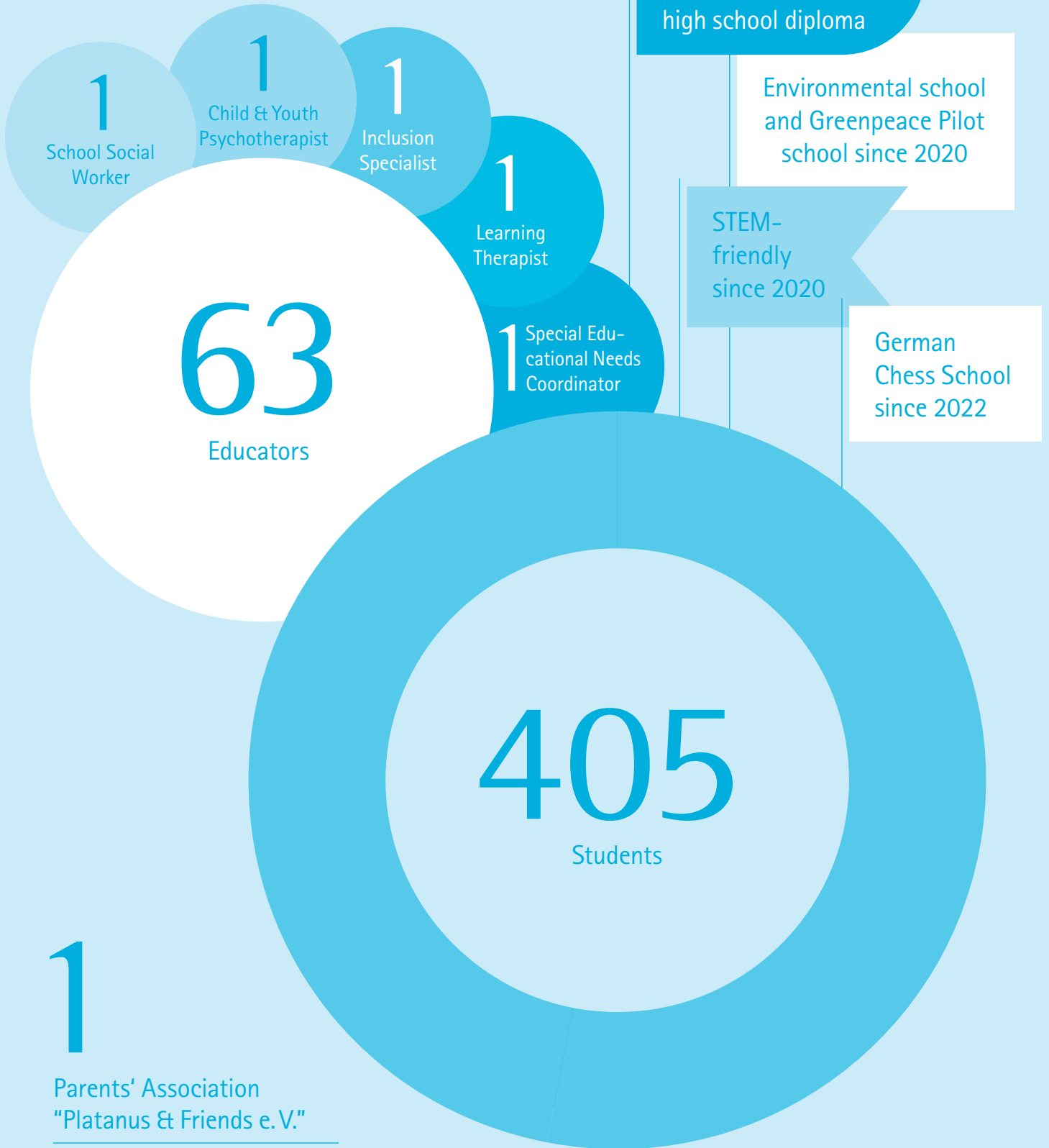
**50:50**  
 We learn in German  
 and English!

Years

**1 to 9** two lines  
 1 to 9

**10** one line

# Interesting Figures



6 board, 65 members  
and about EUR 13,000 per year  
for school projects

# Teaching and Timetable Primary School

In accordance with the specific profile of our school, we place the subject and pedagogical focus of our lessons on bilingual education in German and English as well as broadening mathematical and scientific topics, and their use in questions and areas relating to careers and everyday life.

We base our timetable on the standard Berliner Rahmenlehrplan (Berlin curriculum) and the Berliner Stundentafel (Berlin timetable). We complement this timetable by placing emphasis on the following:

- English from Year 1
- Strengthened Science and Social Studies teaching, incl. IT lessons
- Swimming lessons in Year 3 (1 hour per week)
- Bicycle riding test in Year 4
- Elective courses in Year 5 and 6

Subject teaching is spread across the six primary school levels and is taught equally in both English and in German. The ratio of teaching in German/English can vary between individual year levels.

Subject	Years	
	1 to 4	5 and 6
German	6	5
English – 1 <sup>st</sup> foreign language	5	5
Mathematics	5	5
Science and Social Studies	4	–
Natural Sciences	–	4
Social Sciences	–	3
Music	2	2
Art	2	2
Physical Education	3	3
Compulsory Courses	–	2
<b>Weekly Hours</b>	<b>27</b>	<b>31</b>

# Teaching and Timetable Secondary School



In accordance with the specific profile of our school, we place the subject and pedagogical focus of our lessons on bilingual education in German and English as well as broadening mathematical and scientific topics, and their use in questions and areas relating to careers and everyday life.

We base our timetable on the standard Berliner Rahmenlehrplan (Berlin curriculum) and the Berliner Studentafel (Berlin timetable) of the Gymnasium. We complement this timetable by placing emphasis on the following:

- Years 7 to 10: an additional weekly English lesson
- Years 7 and 8: two additional weekly Natural Sciences lessons (divided into the subjects Biology, Chemistry and Physics)
- Years 7 to 10: an additional weekly Social Sciences lesson (divided into the subjects History, Political Education and Geography)
- Years 9 and 10: an additional weekly Spanish lesson

Elective subjects are removed because the students cover a variety of different themes through bi-weekly project days.

Subject teaching is spread across the four secondary school years and is taught equally in both English and in German. The ratio of teaching in German/English can vary between individual year levels.

Subject	Years 7 to 10
German	4
English – 1 <sup>st</sup> foreign language	4
Mathematics	4
Spanish – 2 <sup>nd</sup> foreign language	4
Biology	2
Physics	2
Chemistry	2
History	1
Political Education	1
Geography	1
Ethics	2
Music	1
Art	1
Physical Education	3
Economics / Work / Technology (WAT)	2
<b>Weekly hours</b>	<b>34</b>

# Daily Schedule

## Years 1 and 2

Time	Monday	Tuesday	Wednesday	Thursday	Friday
at 8 am	Arriving in the classroom				
8.10 to 8.50 am	1 <sup>st</sup> block	1 <sup>st</sup> block	1 <sup>st</sup> block	1 <sup>st</sup> block	1 <sup>st</sup> block
8.50 to 9.30 am	1 <sup>st</sup> Break				
9.30 to 10.50 am	2 <sup>nd</sup> block	2 <sup>nd</sup> block	2 <sup>nd</sup> block	2 <sup>nd</sup> block fort-nightly Project day	2 <sup>nd</sup> block
10.50 to 11.30 am	Lunch and Breaktime				
11.30 am to 1.30 pm	3 <sup>rd</sup> block	3 <sup>rd</sup> block	3 <sup>rd</sup> block	3 <sup>rd</sup> block fort-nightly Project day	3 <sup>rd</sup> block
1.30 to 2.10 pm	2 <sup>nd</sup> Break/Snack				
2.10 to 3.30 pm	Earlier release time: 1.30 pm or after Snack	4 <sup>th</sup> block	4 <sup>th</sup> block	4 <sup>th</sup> block	Earlier release time: 1.30 pm or after Snack

If needed, EAL (English as an Additional Language), DaZ (German as a Second Language), support lessons German/English/Maths – possible after school hours.

# Daily Schedule

## Years 3 and 4



Time	Monday	Tuesday	Wednesday	Thursday	Friday
at 8 am	Arriving in the classroom				
8.10 to 9.30 am	1 <sup>st</sup> block	1 <sup>st</sup> block	1 <sup>st</sup> block	1 <sup>st</sup> block	1 <sup>st</sup> block
9.30 to 10.10 am	1 <sup>st</sup> Break				
10.10 am to 12.10 pm	2 <sup>nd</sup> block	2 <sup>nd</sup> block	2 <sup>nd</sup> block	2 <sup>nd</sup> block fort-nightly Project day	2 <sup>nd</sup> block
12.10 to 12.50 pm	Lunch and Breaktime				
12.50 to 2.10 pm	3 <sup>rd</sup> block	3 <sup>rd</sup> block	3 <sup>rd</sup> block	3 <sup>rd</sup> block fort-nightly Project day	3 <sup>rd</sup> block
2.10 to 2.50 pm	2 <sup>nd</sup> Break/Snack				Earlier release time: 2.10 pm or after Snack
2.50 to 3.30 pm	Earlier release time: 2.10 pm or after Snack	4 <sup>th</sup> block	4 <sup>th</sup> block	4 <sup>th</sup> block	

If needed, EAL (English as an Additional Language), DaZ (German as a Second Language), support lessons German/English/Maths – possible after school hours.  
Swimming lessons Year 3 – Friday till 3.30 pm.

# Daily Schedule

## Years 5 and 6

Time	Monday	Tuesday	Wednesday	Thursday	Friday
at 8 am	Arriving in the classroom				
8.10 to 9.30 am	1 <sup>st</sup> block	1 <sup>st</sup> block	1 <sup>st</sup> block	1 <sup>st</sup> block	1 <sup>st</sup> block
9.30 to 10.10 am	1 <sup>st</sup> Break				
10.10 to 11.30 am	2 <sup>nd</sup> block	2 <sup>nd</sup> block	2 <sup>nd</sup> block fort-nightly Project day	2 <sup>nd</sup> block	2 <sup>nd</sup> block
11.30 am to 12.10 pm	Lunch and Breaktime				
12.10 to 1.30 pm	3 <sup>rd</sup> block	3 <sup>rd</sup> block	3 <sup>rd</sup> block fort-nightly Project day	3 <sup>rd</sup> block	3 <sup>rd</sup> block
1.30 to 2.10 pm	2 <sup>nd</sup> Break/Snack				
2.10 to 3.30 pm	4 <sup>th</sup> block	4 <sup>th</sup> block	4 <sup>th</sup> block	4 <sup>th</sup> block	Earlier release time: 1.30 pm or after Snack

If needed, EAL (English as an Additional Language), DaZ (German as a Second Language), support lessons German/English/Maths – possible after school hours.



# Daily Schedule

## Years 7 to 10

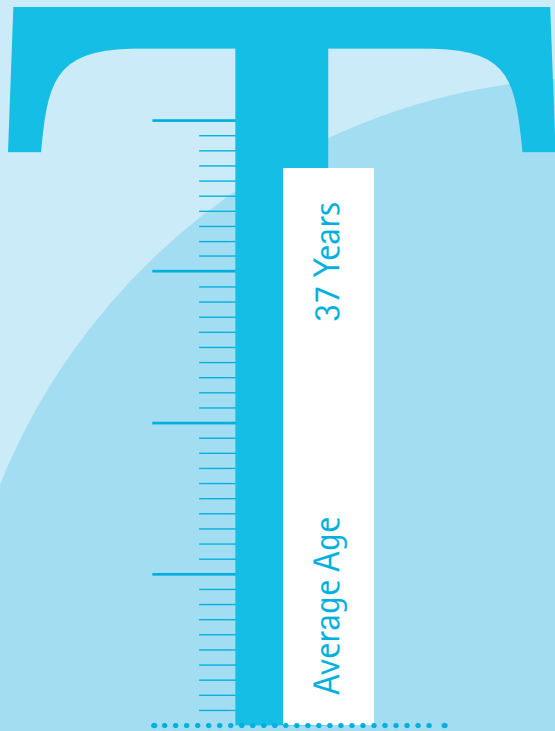
Time	Monday	Tuesday	Wednesday	Thursday	Friday
at 8 am	Arriving in the classroom				
8.10 to 9.30 am	1 <sup>st</sup> block	1 <sup>st</sup> block	1 <sup>st</sup> block	1 <sup>st</sup> block	1 <sup>st</sup> block
9.30 to 10.10 am	1 <sup>st</sup> Break and Consultations				
10.10 to 11.30 am	2 <sup>nd</sup> block	2 <sup>nd</sup> block	2 <sup>nd</sup> block fort-nightly Project day	2 <sup>nd</sup> block	2 <sup>nd</sup> block
11.30 am to 12.10 pm	Lunch and Breaktime				
12.10 to 1.30 pm	3 <sup>rd</sup> block	3 <sup>rd</sup> block	3 <sup>rd</sup> block fort-nightly Project day	3 <sup>rd</sup> block	3 <sup>rd</sup> block
1.30 to 2.10 pm	2 <sup>nd</sup> Break/Snack and Consultations				
2.10 to 3.30 pm	4 <sup>th</sup> block: The end of lessons varies according to the timetable in the individual classes from 1.30 pm to 3.30 pm.				

*If needed, EAL (English as an Additional Language), DaZ (German as a Second Language), support lessons German/English/Maths – possible before and after school lessons.*

# Work & Travel Program

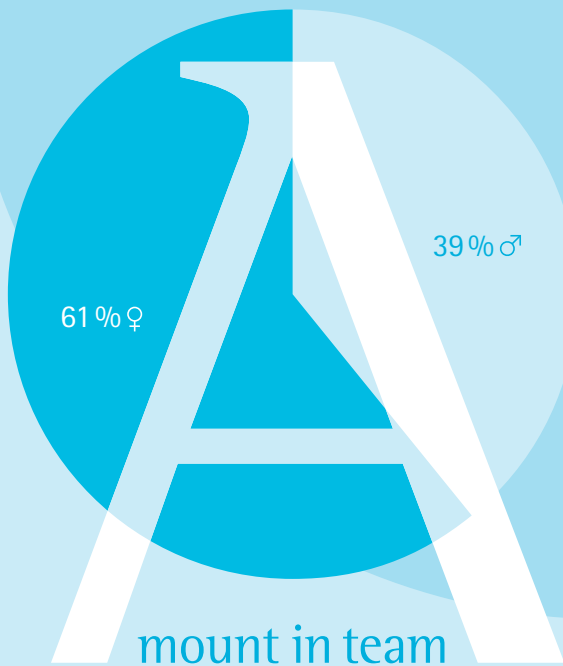
Years	Work	Travel
Year 5	<ul style="list-style-type: none"> <li>■ Class excursions: Introduction to interesting careers in and around Berlin</li> </ul>	<ul style="list-style-type: none"> <li>■ 3 to 5 day experiential education class trip with the focus on nature and the environment, sport movement and group processes (e.g. camping, canoeing and cycling)</li> </ul>
Year 6	<ul style="list-style-type: none"> <li>■ 1 day of job shadowing (alone or in pairs)</li> </ul>	<ul style="list-style-type: none"> <li>■ 1 week trip and last class trip of primary school to a European country (non-German speaking) in coordination with the students with a program on language, culture, country and people</li> </ul>
Year 7	<ul style="list-style-type: none"> <li>■ 1 day <i>Komm-auf-Tour</i> for career orientation</li> <li>■ 3 days professional internship (alone or in pairs) in Berlin and surroundings with preparation follow-up in WAT lessons (Economy/Work/Technology)</li> </ul>	<ul style="list-style-type: none"> <li>■ 3 to 5 day experiential education class trip with the focus on nature and the environment, sport movement and group processes (e.g. camping, canoeing and cycling)</li> </ul>
Year 8	<ul style="list-style-type: none"> <li>■ 1 day visit to the <i>Berufs-informationszentrum</i> (BIZ) for career orientation</li> <li>■ 3 days professional internship (alone or in pairs) in Berlin and surroundings with preparation follow-up in WAT lessons (Economy/Work/Technology)</li> </ul>	<ul style="list-style-type: none"> <li>■ 1 week career oriented class trip with agriculture, craftwork, environmental, biodiversity, natural resources, climate change, sustainability focus as well as careers and life models in Germany</li> </ul>
Year 9	<ul style="list-style-type: none"> <li>■ 1 day visit to the <i>Berufs-informationszentrum</i> (BIZ) for career orientation</li> <li>■ 3 days professional internship (alone or in pairs) in Berlin and surroundings with preparation follow-up in WAT lessons (Economy/Work/Technology)</li> </ul>	<ul style="list-style-type: none"> <li>■ 2 week exchange with our partner school near Madrid (reciprocal exchange one week "homestay" in families)</li> </ul>
Year 10	<ul style="list-style-type: none"> <li>■ 2 weeks of work experience outside Berlin, in Europe (alone or in pairs) with preparation and follow-up in the WAT (Economy/Work/Technology) lessons</li> </ul>	<ul style="list-style-type: none"> <li>■ 2 to 5 day final trip in consultation with students, parents and class teacher; students organize the trip themselves with the help of their class teacher</li> </ul>

# Interesting Figures



31 speak English with our students as a native speaker or at a native-speaker level, 27 speak

German with our students as a native speaker or at a native level. 7 are bilingual.



# The Tuition Fee/s

## Schulgeld

We collect income-dependent school fees in order to allow many children to attend our school.

The annual gross income is deemed to be the sum of the incomes from the previous calendar year (e.g. 2021 for the 2022/23 school year) of both parents or guardians or both contractual partners to the school contract. On the income tax assessment, this is listed under "Total Incomes" (Gesamtbetrag der Einkünfte in German). For more information, see the school fees regulation.

The income tax assessment for the last calendar year or – if this is not yet available – another preliminary form of evidence (for example, the earnings tax year certificate) can be used as evidence of this. Where a gross annual income of EUR 150,000 or above is involved, there is no need to present proof of income. For more information, see the school fees regulation.

The school fees are an annual contribution paid in 12 monthly instalments, which always become due for the first time on 3rd of August and for the last time on 3rd of July in the following year.

The school fees table applies as a reference point for the cost progression of the income-related monthly school fees. The school fees calculator works the monthly school fees out exactly according to income in 1-EUR steps. The school fees calculator can be found at: [www.platanus-schule.de/en/kosten](http://www.platanus-schule.de/en/kosten)

The school fees table applies in conjunction with the school contract and the school fees regulation in the currently valid version.

In accordance with § 2.5 of the school fees regulation, applications for a reduction of, or an exemption from, school fees in justified cases of hardship (e.g. in the case of gross annual incomes below EUR 30,000) can be made to the management of Platanus Bildungs gGmbH.

## School fees – Sibling discount

The full monthly school fees are to be paid for the eldest child at the Platanus Schule Berlin. For the 2nd child and every other child at the Platanus Schule Berlin, the monthly school fees amount to EUR 100.

Annual gross income	Community school (Years 1 to 10) monthly school fees in EUR
up to EUR 30,000	EUR 100
EUR 45,000	EUR 220
EUR 60,000	EUR 275
EUR 75,000	EUR 330
EUR 90,000	EUR 385
EUR 120,000	EUR 440
more than EUR 150,000	EUR 495

Valid since 1<sup>st</sup> of August 2018



## School fees – Loyalty discount

The full monthly school fees are to be paid for the oldest child at the Platanus Schule Berlin. For the second and each additional child at Platanus School Berlin, the monthly tuition is basically EUR 100 per child. If the tuition, calculated according to the following formula, is less than EUR 100, this formula will be applied:

- first sibling:  
25% discount on the tuition of the 1st child,
- second sibling:  
50% discount on the tuition of the 1st child,
- third and each additional sibling:  
75% discount on the tuition of the 1st child.

This formula applies if:

- annual gross income less than or equal to EUR 34,000 for the second child
- annual gross income less than or equal to EUR 42,300 for the third child
- annual gross income less than or equal to EUR 96,000 for the fourth and each additional child.

The tuition for the first child is always calculated according to the annual gross income of the contracting parties. This discount only applies to siblings.

## All-day care in the primary school from Years 1 to 6 (in addition to the school fees)

We offer all-day care from 6 am to 6 pm with a rhythmic daily routine and a comprehensive offering from our Erzieher\*innen. For this reason, an additional full-time contract is concluded alongside the school contract. You can apply for the so-called voucher for before-and-after-school care (EFöB-Gutschein) through the competent youth welfare office (Jugendamt) of the respective residential district (for the first time for grades 1 and 2, then again for grades 3 and 4 and a third time for grades 5 and 6).

The statutorily regulated cost-sharing by the parents for the Supplementary Support and Care (EföB) is not included in the school fees and is determined by the cost decision of District Office/Youth Welfare Office of the respective residential district in Berlin.

The amount of the cost-sharing from Year 3 is dependent on the scope of support (from 1.30 pm to 4 pm is the obligatory full-day operation for all; additionally possible from 6 am until 7.30 am and/or 4 pm to 6 pm). It is based on income and the number of siblings. Since school year 2019/20, the cost-sharing for Years 1 and 2 are omitted.

The cost tables for before-and-after-school-care (EföB) can be found online. Parents' share for one child in the family and care from 1.30 pm to 6 pm currently ranges between EUR 16 and EUR 194. You can always contact our school office for further information.

## Catering (in addition to the school fees)

All students in Years 1 to 6 are obliged to take part in the lunch. This is optional for students in Years 7 to 10. You can see parent's monthly contribution to catering in adjoining table.

Meals consist of lunch including salad, fruit and drinks (sugar-free tea and water).

Primary school (years 1 to 6) – mandatory	
Lunch	No costs, due to a regulation of the Berlin Senate pertaining to free lunches
Secondary school (years 7 to 10) – optional	
Lunch	EUR 69

## Other costs (in addition to the school fees)

The previously listed contributions (school fees, full-day care for the primary school, catering, etc.), are supplemented by the following other costs:

What for?	Costs per school year	
	Years 1 to 6	Years 7 to 10
Joint fund <sup>1</sup> for working materials, class fund, entrance fees and solidarity contribution	95 Euro	95 Euro
Teaching materials and learning resources contribution <sup>2</sup>	–	100 Euro
BVG public transport tickets	Free of charge due to a regulation of the Berlin Senate pertaining to BVG tickets	
Locker hire from Year 3	Cost free as of the 2019/20 school year	
Class trips		
Special extra-curricular activities of co-operation partners (e.g. climbing, swimming, individual instrumental lessons)		

<sup>1</sup> The joint funds for Years 1 to 10 in a total amount of EUR 95 per school year contain the following flat-rate costs:

- Working materials (files, exercise books, pads, folders, calculators, etc.) in the amount of approximately EUR 40.
- Class fund (e.g. decorations for the classroom, gifts for parents or for special occasions, special educational materials) in the amount of approximately EUR 10.
- Admission fees and participation fees (excursions, trips, competitions) in the amount of approximately EUR 40.
- Solidarity contribution in the amount of EUR 5 (this money is used to pay into the class fund on behalf of BuT pupils or in the case of hardship applications).

<sup>2</sup> The teaching materials and learning resources include textbooks for borrowing, workbooks, class reading materials, licences, and all teaching and learning aids for subject teaching and for the extra-curricular program. Since school year 2019/20 teaching materials and learning resources are completely covered by the school fees for Years 1-6. For Years 7 to 10, a teaching materials and learning resources contribution in the amount of 100 EUR per school year is charged, since the expenses are higher in secondary school.

## Tax deductibility

Up to 30% of parents' contribution for general education schools such as a Gemeinschaftsschule – Primary and Secondary School – are tax deductible as school fees under special expenses ("Sonderausgaben") in your tax return.

Excluded from this are charges for accommodation, meals and care of the child. Since 2008, a tax effective maximum amount of EUR 5,000 per child, parents and year (= 30% of EUR 16,667) applies.

The costs of the before-and-after-school care can, if necessary, be considered to be income-related child care costs within the context of the income tax return if the child lives in the household and is not yet 15 years of age.

If a single parent or both parents is/are in employment, the care expenses in the amount of two-thirds of the expenses, however up to a maximum of EUR 4,000 per child per year, can be taken into account in the calculation of income as operating or professional expenses.

We do not accept any liability for this information pertaining to tax deductibility. Please check with your tax advisor with regard to your individual circumstances.





Platanus Schule Berlin  
Berliner Straße 12  
13187 Berlin

Phone 030/49 00 48 80  
Fax 030/49 00 48 829

[info@platanus-schule.de](mailto:info@platanus-schule.de)  
[www.platanus-schule.de](http://www.platanus-schule.de)

 [fb.com/platanus.berlin](https://www.facebook.com/platanus.berlin)  
 [@platanus\\_schule](https://www.instagram.com/platanus_schule)

P  
a  
t