



Facts

and

Figures

2023/24

Schoolhouse built in  
**1923**

First Ever Day  
of School  
August 23, 2010

**39**

spoken native languages  
other than German and English  
in the families of our  
school community

5%  
trilingual families

4%  
other language/  
other language  
families

13%  
English/  
other  
language  
families

7%  
German/  
other language  
families

25%  
German/English  
families

39%  
both parents  
German native speakers

Afrikaans, Arabic,  
Bengali, Bulgarian, Chinese,  
Croatian, Czech, Danish, Dutch,  
Farsi, Finnish, French, Gujarati,  
Hebrew, Hindi, Hungarian, Indonesian,  
Italian, Japanese, Kannada, Kazakh,  
Kurdish, Lithuanian, Malayalam, Marathi,  
Mongolian, Polish, Portuguese, Roma-  
nian, Russian, Slovenian, Spanish,  
Swedish, Tamil, Thai, Turkish,  
Ukrainian, Urdu,  
Vietnamese

7%  
both parents  
English native speakers

**50:50**

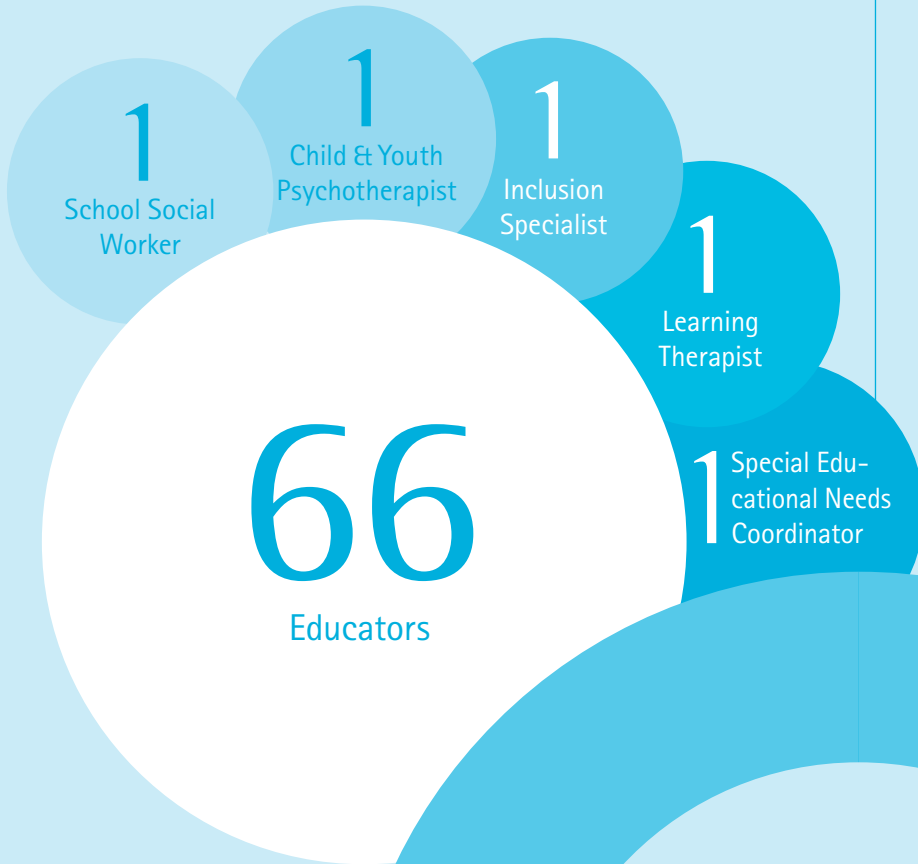
We learn in German  
and English!

Years

**1a to 10a** two lines  
**1b to 10b**

Starting school year 2024/25:  
Introduction of the gymnasiale  
Oberstufe (high school diploma)

# Interesting Figures



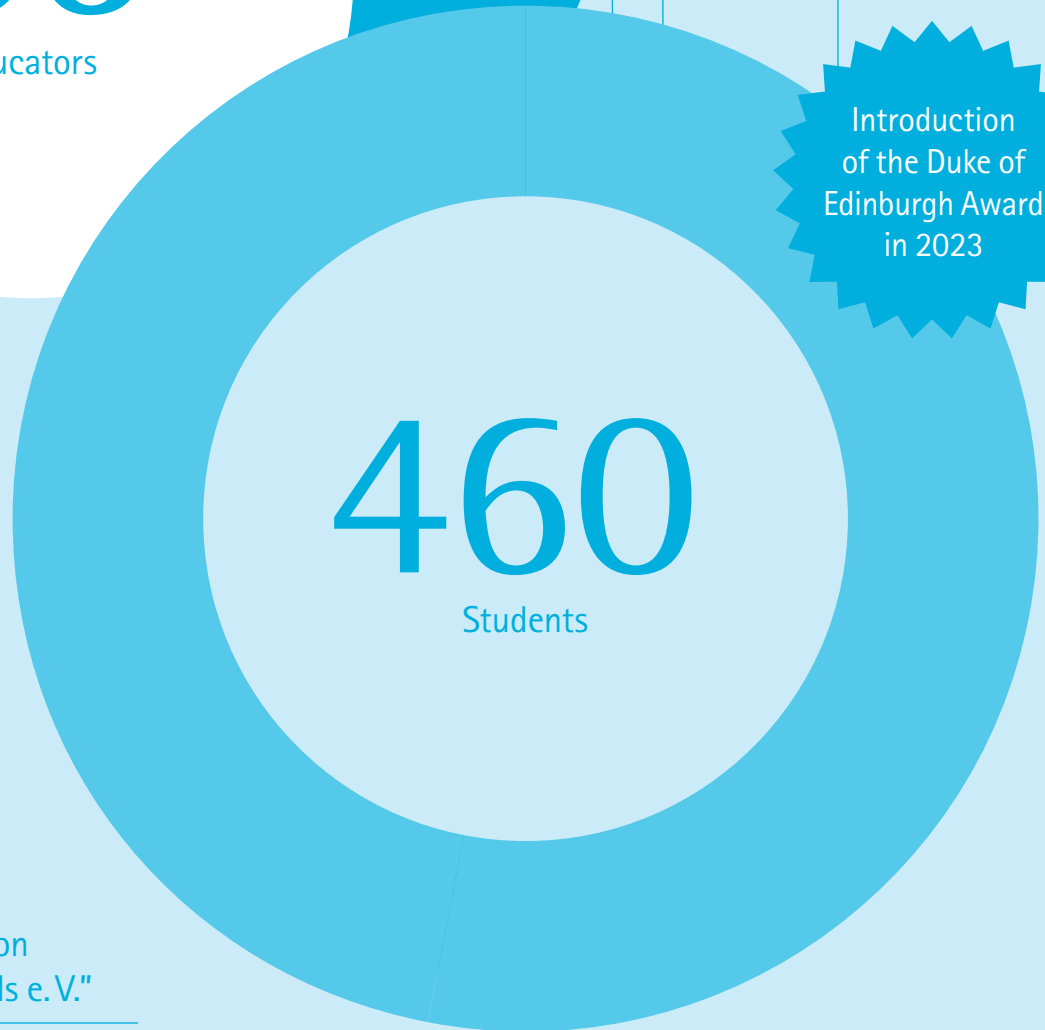
Digital School since 2023

Environmental School in Europe and Greenpeace Pilot school since 2020

STEM-friendly since 2020

German Chess School since 2022

Introduction of the Duke of Edinburgh Award in 2023



1

Parents' Association  
"Platanus & Friends e.V."

6 board members, 70 members and about EUR 13,000 per year for school projects

# Teaching and Timetable Primary Level

In accordance with the specific profile of our school, we place the subject and pedagogical focus of our lessons on bilingual education in German and English as well as broadening mathematical and scientific topics, and their use in questions and areas relating to careers and everyday life.

We base our timetable on the standard Berliner Rahmenlehrplan (Berlin curriculum) and the Berliner Stundentafel (Berlin timetable). We complement this timetable by placing emphasis on the following:

- English from Year 1
- Strengthened Science and Social Studies teaching, incl. IT lessons
- Swimming lessons in Year 3 (1 hour per week)
- Bicycle riding test in Year 4
- Elective courses in Year 5 and 6
- 10 to 12 project days per year in our school and outside of school

Subject teaching is spread across the six primary school levels and is taught equally in both English and in German. The ratio of teaching in German/English can vary between individual year levels.

| Subject                                    | Years     |           |
|--|-----------|-----------|
|  | 1 to 4    | 5 and 6   |
| German                                     | 6         | 5         |
| English – 1 <sup>st</sup> foreign language | 5         | 5         |
| Mathematics                                | 5         | 5         |
| Science and Social Studies                 | 4         | –         |
| Natural Sciences                           | –         | 4         |
| Social Sciences                            | –         | 3         |
| Music                                      | 2         | 2         |
| Art  | 2         | 2         |
| Physical Education                         | 3         | 3         |
| Compulsory Courses                         | –         | 2         |
| <b>Weekly Hours</b>                        | <b>27</b> | <b>31</b> |

# Teaching and Timetable Secondary Level 1



In accordance with the specific profile of our school, we place the subject and pedagogical focus of our lessons on bilingual education in German and English as well as broadening mathematical and scientific topics, and their use in questions and areas relating to careers and everyday life.

We base our timetable on the standard Berliner Rahmenlehrplan (Berlin curriculum) and the Berliner Studentafel (Berlin timetable) of the Gymnasium. We complement this timetable by placing emphasis on the following:

- Years 7 to 10: an additional weekly English lesson
- Years 7 and 8: two additional weekly Natural Sciences lessons (divided into the subjects Biology, Chemistry and Physics)
- Years 9 and 10: an additional weekly Spanish lesson
- Economy/Work/Technology – Basic education in these subject areas as well as active vocational and study orientation
- 10 to 12 project days per year in our school and outside of school

Elective subjects are removed because the students cover a variety of different themes on our project days.

Subject teaching is spread across the four secondary school years and is taught equally in both English and in German. The ratio of teaching in German/English can vary between individual year levels.

| Subject                                    | Years     |          |
|--|-----------|----------|
|  | 7 and 8   | 9 and 10 |
| German                                     | 4         | 4        |
| English – 1 <sup>st</sup> foreign language | 4         | 4        |
| Mathematics                                | 4         | 4        |
| Spanish – 2 <sup>nd</sup> foreign language | 4         | 4        |
| Biology                                    | 2         | 2        |
| Physics                                    | 2         | 2        |
| Chemistry                                  | 2         | 2        |
| History                                    | 1         | 2        |
| Political Education                        | 2         | 2        |
| Geography                                  | 1         | 1        |
| Ethics                                     | 2         | 2        |
| Music                                      | 1         | 1        |
| Art  | 1         | 1        |
| Physical Education                         | 3         | 3        |
| Economics / Work / Technology (WAT)        | 2         | 1        |
| <b>Weekly hours</b>                        | <b>35</b> |          |

# Daily Schedule

## Years 1 and 2

| Time                | Monday  | Tuesday                     | Wednesday             | Thursday              | Friday  |
|---------------------|---|-----------------------------|-----------------------|-----------------------|---|
| at 8 am             | Arriving in the classroom                                   |                             |                       |                       |   |
| 8.10 to 8.50 am     | 1 <sup>st</sup> block                                       | 1 <sup>st</sup> block       | 1 <sup>st</sup> block | 1 <sup>st</sup> block | 1 <sup>st</sup> block                                       |
| 8.50 to 9.30 am     | 1 <sup>st</sup> Break                                       |                             |                       |                       |   |
| 9.30 to 10.50 am    | 2 <sup>nd</sup> block                                       | 2 <sup>nd</sup> block       | 2 <sup>nd</sup> block | 2 <sup>nd</sup> block | 2 <sup>nd</sup> block                                       |
| 10.50 to 11.30 am   | Lunch and Breaktime   |                             |                       |                       |   |
| 11.30 am to 1.30 pm | 3 <sup>rd</sup> block                                       | 3 <sup>rd</sup> block       | 3 <sup>rd</sup> block | 3 <sup>rd</sup> block | 3 <sup>rd</sup> block                                       |
| 1.30 to 2.10 pm     | Earlier release time:<br>1.30 pm or after<br>Snack possible | 2 <sup>nd</sup> Break/Snack |                       |                       | Earlier release time:<br>1.30 pm or after<br>Snack possible |
| 2.10 to 3.30 pm     |   | 4 <sup>th</sup> block       | 4 <sup>th</sup> block | 4 <sup>th</sup> block |   |

If needed, EAL (English as an Additional Language), DaZ (German as a Second Language), support lessons German/English/Maths – possible after school hours.

# Daily Schedule

## Years 3 and 4



| Time                 | Monday  | Tuesday                     | Wednesday             | Thursday              | Friday  |
|----------------------|---|-----------------------------|-----------------------|-----------------------|---|
| at 8 am              | Arriving in the classroom   |                             |                       |                       |   |
| 8.10 to 9.30 am      | 1 <sup>st</sup> block   | 1 <sup>st</sup> block       | 1 <sup>st</sup> block | 1 <sup>st</sup> block | 1 <sup>st</sup> block   |
| 9.30 to 10.10 am     | 1 <sup>st</sup> Break   |                             |                       |                       |   |
| 10.10 am to 12.10 pm | 2 <sup>nd</sup> block   | 2 <sup>nd</sup> block       | 2 <sup>nd</sup> block | 2 <sup>nd</sup> block | 2 <sup>nd</sup> block   |
| 12.10 to 12.50 pm    | Lunch and Breaktime   |                             |                       |                       |   |
| 12.50 to 2.10 pm     | 3 <sup>rd</sup> block   | 3 <sup>rd</sup> block       | 3 <sup>rd</sup> block | 3 <sup>rd</sup> block | 3 <sup>rd</sup> block   |
| 2.10 to 2.50 pm      | Earlier release time:<br>2.10 pm<br>or after<br>Snack<br>possible | 2 <sup>nd</sup> Break/Snack |                       |                       | Earlier release time:<br>1.30 pm<br>or after<br>Snack<br>possible |
| 2.50 to 3.30 pm      |   | 4 <sup>th</sup> block       | 4 <sup>th</sup> block | 4 <sup>th</sup> block |   |

If needed, EAL (English as an Additional Language), DaZ (German as a Second Language), support lessons German/English/Maths – possible after school hours.  
Swimming lessons Year 3 – Friday till 3.30 pm.

# Daily Schedule

## Years 5 and 6

| Time                 | Montag                  | Dienstag | Mittwoch | Donnerstag | Freitag  |
|----------------------|-------------------------|----------|----------|------------|--|
| at 8 am              | Ankommen im Klassenraum |          |          |            |  |
| 8.10 to 9.30 am      | 1. Block                | 1. Block | 1. Block | 1. Block   | 1. Block   |
| 9.30 to 10.10 am     | Frühstückspause         |          |          |            |  |
| 10.10 to 11.30 am    | 2. Block                | 2. Block | 2. Block | 2. Block   | 2. Block   |
| 11.30 am to 12.10 pm | Mittagspause            |          |          |            |  |
| 12.10 to 1.30 pm     | 3. Block                | 3. Block | 3. Block | 3. Block   | 3. Block   |
| 1.30 to 2.10 pm      | Snackpause              |          |          |            |  |
| 2.10 to 3.30 pm      | 4. Block                | 4. Block | 4. Block | 4. Block   | Earlier<br>release time:<br>1.30 pm<br>or after<br>Snack<br>possible |

If needed, EAL (English as an Additional Language), DaZ (German as a Second Language), support lessons German/English/Maths – possible after school hours.



# Daily Schedule

## Years 7 to 10

| Time                 | Monday   | Tuesday               | Wednesday             | Thursday              | Friday                |
|----------------------|--|-----------------------|-----------------------|-----------------------|-----------------------|
| at 8.20 am           | Arriving in the classroom  |                       |                       |                       |                       |
| 8.30 to 9.50 am      | 1 <sup>st</sup> block  | 1 <sup>st</sup> block | 1 <sup>st</sup> block | 1 <sup>st</sup> block | 1 <sup>st</sup> block |
| 9.50 to 10.10 am     | 1 <sup>st</sup> Break  |                       |                       |                       |                       |
| 10.10 to 11.30 am    | 2 <sup>nd</sup> block  | 2 <sup>nd</sup> block | 2 <sup>nd</sup> block | 2 <sup>nd</sup> block | 2 <sup>nd</sup> block |
| 11.30 am to 12.10 pm | Lunch and Breaktime  |                       |                       |                       |                       |
| 12.10 to 1.30 pm     | 3 <sup>rd</sup> block  | 3 <sup>rd</sup> block | 3 <sup>rd</sup> block | 3 <sup>rd</sup> block | 3 <sup>rd</sup> block |
| 1.30 to 1.50 pm      | 2 <sup>nd</sup> Break/Snack  |                       |                       |                       |                       |
| 1.50 to 3.10 pm      | 4 <sup>th</sup> block:<br>The end of lessons varies according to the timetable<br>in the individual classes from 1.30 pm to 3.30 pm. |                       |                       |                       |                       |

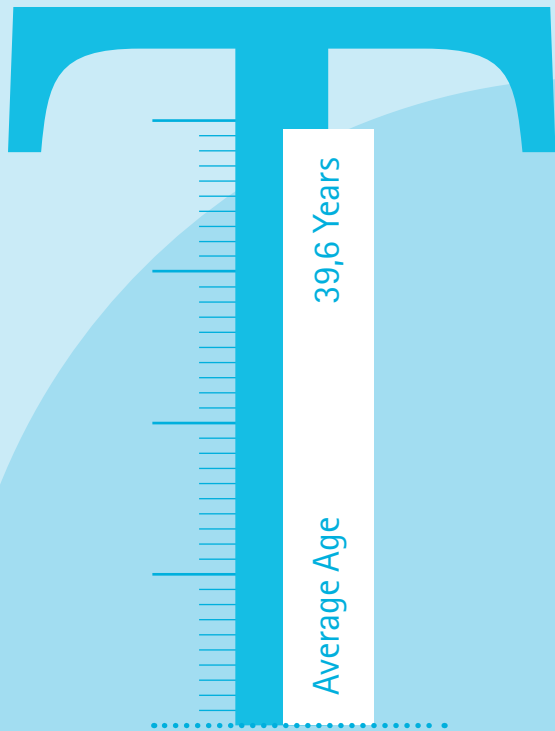
*If needed, EAL (English as an Additional Language), DaZ (German as a Second Language), support lessons German/English/Maths as well as consultations – possible before and after school lessons.*

# Work & Travel Program

| Years   | Work  | Travel  |
|---------|---|---|
| Year 5  | <ul style="list-style-type: none"> <li>Excursions to introduce interesting professions in Berlin and the surrounding area in groups of max. 12 students</li> </ul>  | <ul style="list-style-type: none"> <li>3 to 5 day experiential education class trip with the focus on nature and the environment, sport movement and group processes (e.g. camping, canoeing and cycling)</li> </ul>                      |
| Year 6  | <ul style="list-style-type: none"> <li>Job Fair – Companies, cooperation partners or parents present occupational profiles in the school</li> </ul>   | <ul style="list-style-type: none"> <li>1 week trip and last class trip of primary school to a European country (non-German speaking) in coordination with the students with a program on language, culture, country and people</li> </ul> |
| Year 7  | <ul style="list-style-type: none"> <li>1 day <i>Komm-auf-Tour</i> for career orientation</li> <li>Job Shadowing – Student observes an employed person at work and writes a report about it (1 day approx. 4h)</li> </ul>  | <ul style="list-style-type: none"> <li>3 to 5 day experiential education class trip with the focus on nature and the environment, sport movement and group processes (e.g. camping, canoeing and cycling)</li> </ul>                      |
| Year 8  | <ul style="list-style-type: none"> <li>Job Shadowing – Student observes an employed person at work and writes a report about it (1 day approx. 4h)</li> <li>Visit to a company</li> </ul>   | <ul style="list-style-type: none"> <li>1 week career-oriented trip with focus on agriculture, environment, biodiversity, resources, climate change and sustainability</li> </ul>  |
| Year 9  | <ul style="list-style-type: none"> <li>Two-week internship in a company or institution</li> <li>Attendance at the vocational and internship fair "vocatium" or similar events</li> <li>Organisation of student companies</li> <li>Active career guidance</li> </ul> | <ul style="list-style-type: none"> <li>2 week exchange with our partner school near Madrid (reciprocal exchange one week "homestay" in families)</li> </ul>   |
| Year 10 | <ul style="list-style-type: none"> <li>Two-week internship in a company or institution</li> <li>Attendance at the vocational and internship fair "vocatium" or similar events</li> <li>Organisation of student companies</li> <li>Active career guidance</li> </ul> | <ul style="list-style-type: none"> <li>3 to 5 day final trip in consultation with students, parents and class teacher; students organize the trip themselves with the help of their class teacher</li> </ul>                              |

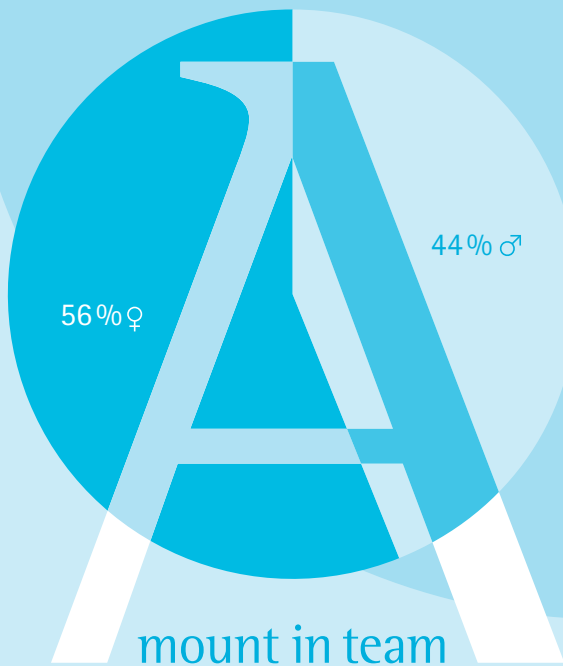
The preparation and follow-up of all "Work" activities from grade 7 onwards take place in the Economics/Work/Technology lessons.

# Interesting Figures



31 speak English with our students as a native speaker or at a native-speaker level, 28 speak

German with our students as a native speaker or at a native level. 7 are bilingual.



# The Tuition Fee/s

## School fees

We collect income-dependent school fees in order to allow many children to attend our school.

The annual gross income is deemed to be the sum of the incomes from the previous calendar year (e.g. 2022 for the 2023/24 school year) of both parents or guardians or both contractual partners to the school contract. On the income tax assessment, this is listed under "Total Incomes" (Gesamtbetrag der Einkünfte in German). For more information, see the school fees regulation.

The income tax assessment for the last calendar year or – if this is not yet available – another preliminary form of evidence (for example, the earnings tax year certificate) can be used as evidence of this. Where a gross annual income of EUR 150,000 or above is involved, there is no need to present proof of income. For more information, see the school fees regulation.

The school fees are an annual contribution paid in 12 monthly instalments, which always become due for the first time at the official beginning of the school year on 3rd August and for the last time on 3rd July in the following year.

The school fees table applies as a reference point for the cost progression of the income-related monthly school fees. The school fees calculator works the monthly school fees out exactly according to income in 1-EUR steps. The school fees calculator can be found at: [www.platanus-schule.de/en/kosten](http://www.platanus-schule.de/en/kosten)

In accordance with § 2.5 of the school fees regulation, applications for a reduction of, or an exemption from, school fees in justified cases of hardship (e.g. in the case of gross annual incomes below EUR 30,000) can be made to the management of Platanus Bildungs gGmbH.

| Annual gross income   | Community school (Years 1 to 13) monthly school fees in EUR |
|-----------------------|---|
| up to EUR 30,000      | EUR 100   |
| EUR 45,000            | EUR 231   |
| EUR 60,000            | EUR 289   |
| EUR 75,000            | EUR 347   |
| EUR 90,000            | EUR 404   |
| EUR 120,000           | EUR 462   |
| more than EUR 150,000 | EUR 520   |

*Valid since 1<sup>st</sup> of August 2023. The school fees will increase successively by 2% per year until the school year 2028/29.*



### School fees – Loyalty discount

After 4 years of a child's affiliation to lara.KITA or Platanus, in the kindergarten and/or in the school, parents receive a loyalty discount off the school fees of EUR 50 from the 5<sup>th</sup> year. In the event of the deduction of a loyalty discount, the monthly school fees will still amount to a minimum of EUR 100 per child.

The loyalty discount applies to the oldest child or an only child at Platanus Schule Berlin.

### School fees – Sibling discount

For the eldest child at Platanus Schule Berlin, the full monthly tuition is payable or the loyalty discount is granted.

For the second oldest and each additional child at Platanus Schule Berlin, the monthly tuition is 50% of the income-based tuition without the loyalty discount for the oldest child.

So there is either the loyalty discount or the sibling discount for one child, but not both discounts at the same time.

### All-day care in the primary level from Years 1 to 6 (in addition to the school fees)

We offer all-day care from 6 am to 6 pm with a rhythmic daily routine and a comprehensive offering from our Erzieher\*innen. For this reason, an additional full-time contract is concluded alongside the school contract. You can apply for the so-called voucher for before-and-after-school care (EföB-Gutschein) through the competent youth welfare office (Jugendamt) of the respective residential district (for the first time for grades 1 and 2, then again for grades 3 and 4 and a third time for grades 5 and 6).

The statutorily regulated cost-sharing by the parents for the Supplementary Support and Care (EföB) is not included in the school fees and is determined by the cost decision of District Office/Youth Welfare Office of the respective residential district in Berlin.

The amount of the cost-sharing from Year 3 is dependent on the scope of support (from 1.30 pm to 4 pm is the obligatory full-day operation for all; additionally possible from 6 am until 7.30 am and/or 4 pm to 6 pm). It is based on income and the number of siblings. Since school year 2019/20, the cost-sharing for Years 1 and 2 are omitted.

The cost tables for before-and-after-school-care (EföB) can be found online. Parents' share for one child in the family and care from 1.30 pm to 6 pm currently ranges between EUR 16 and EUR 194. You can always contact our school office for further information.

### Catering (in addition to the school fees)

All students in Years 1 to 6 are obliged to take part in the lunch. This is optional for students in Years 7 to 13. You can see parent's monthly contribution to catering in adjoining table.

Meals consist of a hot lunch including salad, fruit and drinks (sugar-free tea and water).

|  |   |
|--|---|
| Primary level (years 1 to 6) – mandatory   |   |
| Lunch                                      | No costs, due to a regulation of the Berlin Senate pertaining to free lunches |
| Secondary level (years 7 to 13) – optional |   |
| Lunch                                      | EUR 72.90   |

## Other costs (in addition to the school fees)

The previously listed contributions (school fees, full-day care for the primary school, catering, etc.), are supplemented by the following other costs:

| What for?  | Costs per school year – Years 1 to 13   |
|--|---|
| Collective fund <sup>1</sup> "Sammelkasse" for teaching and learning materials in lessons and co-curricular activities, work materials, entrance fees, class funds and solidarity contribution | EUR 285 <sup>2</sup>  |
| BVG public transport tickets   | Free of charge due to a regulation of the Berlin Senate pertaining to BVG tickets |
| Locker hire from Year 3  | Cost free as of the 2019/20 school year   |
| Class trips  | Depending on duration and yeargroup   |
| Special extra-curricular activities of co-operation partners (e.g. climbing, swimming, individual instrumental lessons)  |   |

<sup>1</sup> The collective fund "Sammelkasse" contains the following flat-rate costs:

1) Teaching and learning materials include textbooks for multiple loan, workbooks, class readings, software/app licences as well as all other teaching and learning materials for subject lessons and co-curricular activities;

2) Work equipment (binders, exercise books, pads, folders, file folders, calculators, book covers, copy paper and copies, office materials for lessons and co-curricular activities, school web licence or similar);

3) Entrance fees, participation fees (excursions/trips, competitions);

4) Class fund (decorations for the classroom, material for making presents for parents or birthday children, sun cream, deodorant, handkerchiefs, wet wipes or similar in the classroom);

5) Solidarity contribution (this money is used to pay the collection fund for so called BuT students or in the case of hardship regulation "Härtefallregelung");

<sup>2</sup> The costs for the collective fund "Sammelkasse" are usually due on 01.08. of the respective school year, but can be paid monthly upon request.

## Tax deductibility

Up to 30% of parents' contribution for general education schools such as a Gemeinschaftsschule – Primary and Secondary School – are tax deductible as school fees under special expenses ("Sonderausgaben") in your tax return. Excluded from this are charges for accommodation, meals and care of the child. Since 2008, a tax effective maximum amount of EUR 5,000 per child, parents and year (= 30% of EUR 16,667) applies.

The costs of the before-and-after-school care can, if necessary, be considered to be income-related child care costs within the context of the income tax return if the child lives in the household and is not yet 15 years of age. If a single parent or both parents is/are in employment, the care expenses in the amount of two-thirds of the expenses, however up to a maximum of EUR 4,000 per child per year, can be taken into account in the calculation of income as operating or professional expenses.

We do not accept any liability for this information pertaining to tax deductibility. Please check with your tax advisor with regard to your individual circumstances.

## What other reductions are possible?

- Employer subsidy for school fees of EUR 90 per month or EUR 1,080 per year
- Assumption of costs for class trips by social authorities for recipients of transfer payments (parents of our school community can find the application in the school web)
- Waiver of the collective fund for students with a so called BuT pass and, if applicable, in the case of hardship regulations "Härtefallregelung"





Platanus Schule Berlin  
Berliner Straße 12  
13187 Berlin

Phone 030/49 00 48 80  
Fax 030/49 00 48 829

[info@platanus-schule.de](mailto:info@platanus-schule.de)  
[www.platanus-schule.de](http://www.platanus-schule.de)

 [fb.com/platanus.berlin](https://www.facebook.com/platanus.berlin)  
 [@platanus\\_schule](https://www.instagram.com/platanus_schule)

P  
a  
t